

2803/105

**CLOTHING CONSTRUCTION I
PRACTICAL**

Oct./Nov. 2017

Time: 6 hours



THE KENYA NATIONAL EXAMINATIONS COUNCIL

DIPLOMA IN FASHION DESIGN AND CLOTHING TECHNOLOGY

MODULE I

CLOTHING CONSTRUCTION I PRACTICAL

6 hours

INSTRUCTIONS TO CANDIDATES

1. You should have the following for this examination:

- (i) plain medium weight fabric 1 metre long by 152 cm wide;
- (ii) fusible interfacing 78 cm by 11 cm;
- (iii) sewing thread to match the fabric;
- (iv) one button 1.5 cm wide without a shank;
- (v) brown papers;
- (vi) one large envelope;
- (vii) zip 18 cm (7") long;
- (viii) sewing tools.

2. At the end of the examination, stitch on a label bearing your name and index number on a single layer of fabric without concealing any details and enclose the garment in the large envelope provided.

This paper consists of 2 printed pages

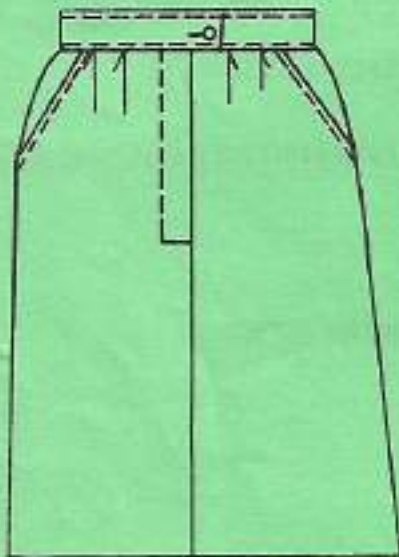
Candidates should check the question paper to ascertain that both pages are printed as indicated and that no questions are missing.

Full skirt length —

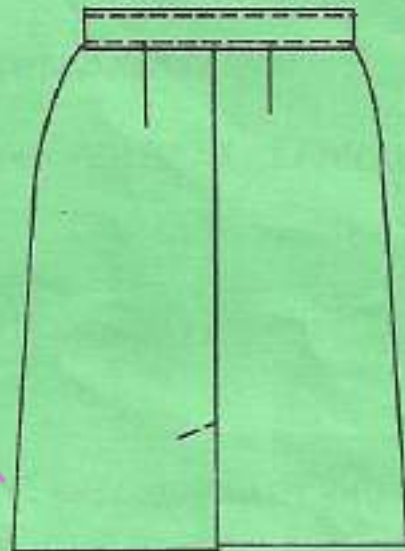
TASKS

Using the materials and the measurements provided, cut out and make the skirt style sketched below as follows:

- (i) use double stitched seams at the sides;
- (ii) make **one** hand worked buttonhole and sew on the button;
- (iii) hand hem the garment.



FRONT VIEW



BACK VIEW

MEASUREMENTS

Waist	=	68 cm	
Hips	=	92 cm	
Waist to hip	=	20.3 cm	- 20.3
Full length	=	60 cm	$\frac{60}{42}$
Waistband depth	=	4 cm	
Pleat depth	=	2 cm	

easytv.com

2.1
42
68
4
12
- 20.3

$\frac{20}{3}$

THIS IS THE LAST PRINTED PAGE.

5 6 $\frac{6.6}{3}$
3 7 0
20